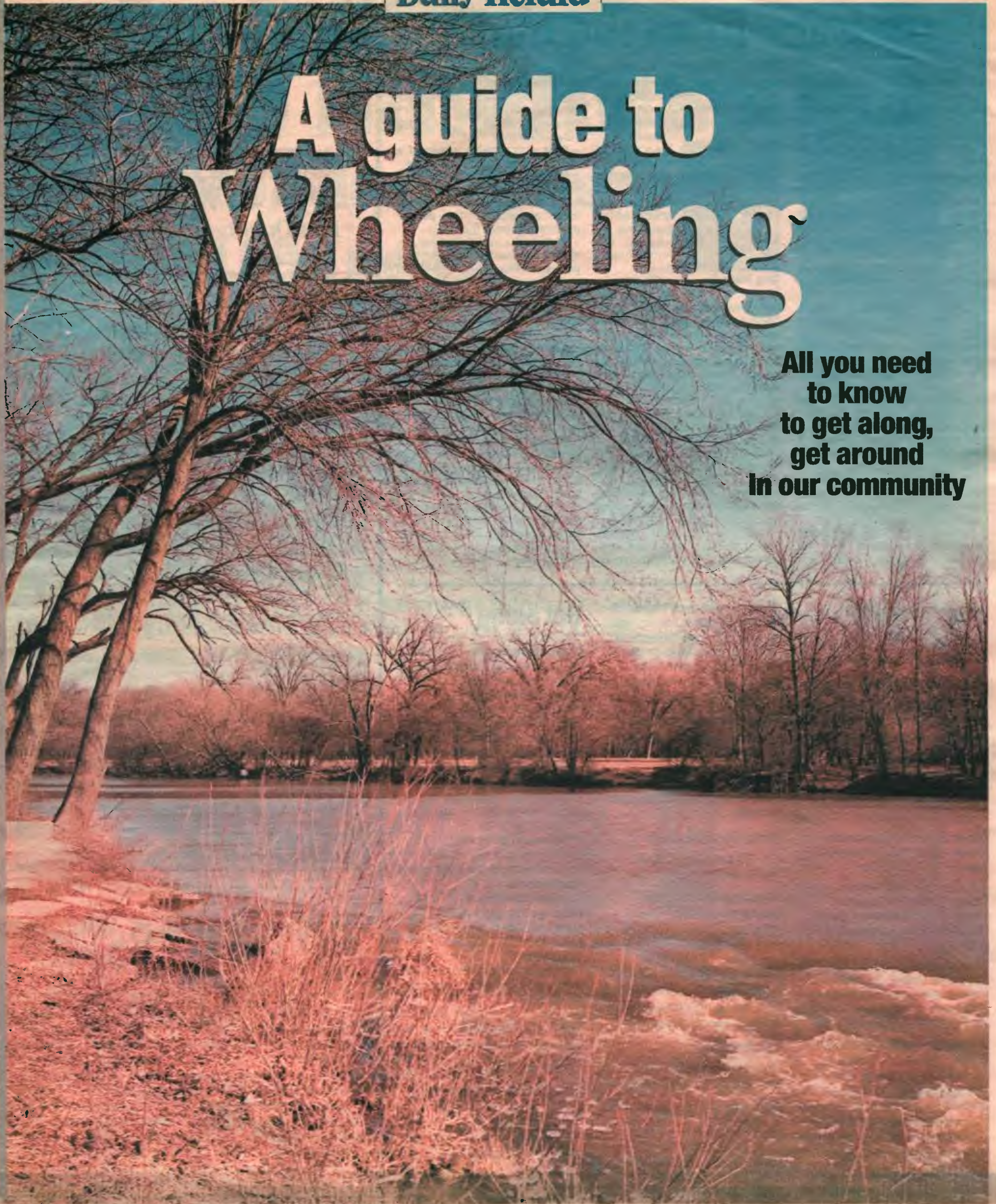


A guide to Wheeling

**All you need
to know
to get along,
get around
in our community**



A message from the mayor

As Wheeling enters the new millennium, we will see many changes in our village. Our location provides easy access to rail and air and interstate highways. We have an outstanding park district, a new and expanded library, and award-winning schools.

Businesses continue to thrive in Wheeling and our reputation continues to build. The village has become a magnet for people who are discovering Wheeling is a great place to live, work and grow.

The changing face of Wheeling involves some remarkable transformations.

New housing is in place at Park Point, Rivermill Crossing and One Milwaukee Place. Kimball Hill has broken ground for 250 new townhouses and condominiums at Astor Place on South Milwaukee Avenue. More is on the way.

Restaurant Row, long a Wheeling centerpiece, continues to grow, with the addition of the Ram Restaurant and Brewery, Buca di Beppo, Benihana of Tokyo, and Leona's Pizzeria.

Target has just opened, adding to the retail complex that includes Sam's Club and Wal-Mart on the north side of town.

Wheeling has seen significant business development with the arrival of Hospital Laundry Ser-

vices, iF Gallery, Midland Paper and Interform Furniture. Suburban Surgical, Wieland Metals, Block and Company, and Burrows Co., among others, have all undertaken major expansions of their facilities, which added numerous jobs to the local economy.



Greg Katocki

Changes also have visited Palwaukee Municipal Airport. North American Jet, a fixed-based operator, arrived two years ago and is already completing a 35,000-square-foot expansion. Signature Aviation has taken over from the former Priester Aviation to give the airport a national anchor. Palwaukee, which is co-owned by the Village of Wheeling and the city of Prospect Heights, is upgrading its main runway for the first time in 20 years to provide safer conditions. Thanks to far-reaching capital improvements, the village's infrastructure is getting an extensive makeover.

The just-completed William Rogers Memorial Diversion Channel will help siphon off storm water

and ease flooding problems.

We are in the fourth year of a 10-year program to install or replace streetlights in all the residential neighborhoods.

New water mains, made of a more durable material, are replacing those which have decayed beyond repair. Along Route 83, a fence provides an attractive, uniform appearance for people motoring through the village.

We're in the midst of a yearlong effort to update the village's Comprehensive Plan, which hasn't been overhauled for almost two decades. The plan will set the agenda for the way Wheeling grows and prospers in the years ahead.

More high-quality businesses can be expected to relocate here in the years ahead. We have an active economic development program whose job is to attract and retain business and industrial firms that will contribute to the village's long-term economic health.

We anticipate many other changes to Wheeling's face in the years ahead. It isn't the same place where the Pottawotami Indians lived 150 years ago.

Wheeling is a town on the move that will, with careful guidance, earn a stellar reputation as a good place to learn, a good place to work and a good place to live.

Community services

Wheeling Township services

1616 N. Arlington Heights Road, Arlington Heights. (847) 259-7730.

Web: www.wheelingtowship.com

Assessor: Assessment complaints, circuit breaker, homeowner's exemption forms, property tax bill information, individual assessment and map information. (847) 259-1515

Clerk: Voter registration and absentee voting, election information, vehicle stickers. (847) 259-7730

Disability services: Advocacy, Advisory Council on Disabilities, temporary disabled parking placards, Meals-on-Wheels, bus service. (847) 259-7730

General assistance: Financial assistance; clothing closet; donations: received and distributed; emergency food pantry, access to care; public aid: forms, assistance. (847) 259-7730

Employment service: (847) 259-7730

Highway commissioner: Unincorporated areas only: snow removal; road, storm sewer, and street sign maintenance and repair. (847) 259-7730

Notary public: (847) 259-7730

Township senior services: Driver's refresher classes; health services;

income tax assistance; information and referral including housing, legal aid, employment, mental health, etc.; education forums; Meals-on-Wheels; RTA Reduced Fare Card; Senior Advisory & Action Council; Senior Bus (847) 259-7743, (847) 259-7733

Village Senior Services

Pavilion Senior Center, 199 N. First St., Wheeling. (847) 459-2670

Wheeling Post Office

250 W. Dundee Road, Wheeling. (847) 537-0700

Social Security Office

215 S. Elmhurst Road, Prospect Heights. (800) 722-1213

Wheeling Community Resource Center

210 N. Wolf Road, Wheeling. (847) 808-1454

Wheeling/Prospect Heights Area Chamber of Commerce

395 E. Dundee Road, Wheeling. (847) 541-0170. www.wphchamber.com

A Safe Place

A haven for domestic violence victims; counseling services. (847) 249-4450

On the cover

The Des Plaines River rolls past Dam No. 1 near Milwaukee Avenue. Photo by Daily Herald staff photographer Bill Zars.

Get along

Chevy Chase facelift 5

The crown jewel of Wheeling's park system gets a new look.

A new Restaurant Row 7

Restaurant Row restaurateurs and their support network band together.

New home for village 8

Wheeling explores options for a new home for local government.

Taste of summer fun 9

The Taste of Wheeling festival is gaining regional appeal — and only promises to get better.

Downtown in the works 10

Wheeling draws on the past as it explores the idea of developing a new downtown area.

New look, new homes 12

Wheeling offers a rich housing market, with homes ranging from \$100,000 to \$450,000.

A rich history 21

The Wheeling of today, with its 34,000 people, had a modest start with a man named Sweet.

Get around

Parks, pools, golf	4
Community & fitness centers	4
Restaurant Row	6
Libraries	10
Utilities	10
Higher education	14
Public schools	15
High schools, private schools	16
Recreation	20
Places of worship	22
Health organizations	22

Spring Fever Sale

iF Gallery
Fine Quality Home Furnishings



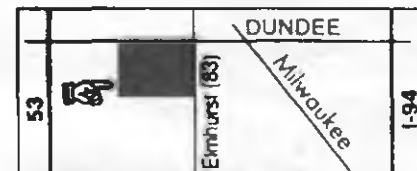
We have the perfect piece of furniture for your home



903 W. Dundee Rd. • Wheeling
(847) 229-9060

Store Hours: Mon, Thurs 10-9
Tues, Wed, Fri 10-6
Sat 10-5 • Sun 12-5

in Dunhurst Plaza



The story

Premier Telecom
A Wireless Communication Company

3600 minutes with nationwide long distance – only \$39.99 a month

3000 night and weekend minutes
600 anytime minutes
with a two-year service contract on this AT&T Wireless Digital Advantage plan



The savings

Get a Nokia 5165 FREE!
We'll even waive the \$35 activation fee.
Credit check and two-year contract required.



The real deal

on the AT&T Wireless Digital Advantage plan can be yours
for life if you come in to an AT&T Wireless dealer today.

welcome to **m**lifeSM



Premier Telecom, Inc.

Inside Palwaukee Plaza
692 N. Milwaukee Ave.
Prospect Heights, IL 60070



847-215-0709

**Come and visit us for
more AT&T Wireless offers.**

©2002 AT&T Wireless. All Rights Reserved. Requires credit approval, minimum of a one-year contract, a cancellation fee and a digital multi-network phone. May not be available for purchase or use in all areas. Airtime for each call is rounded up to the next full minute. Monthly included and promotional minutes cannot be carried over to any other month and must be used in the home calling area. Roaming, additional minute and long distance charges, other restrictions, charges, surcharges and taxes apply. Subject to Terms and Conditions and calling plan brochure. May not be available with other offers. "For Life" offer requires that you remain on the same eligible AT&T Wireless rate plan selected at activation. **Nationwide long distance:** Available on AT&T Wireless Digital Advantage \$39.99 and above. No domestic wireless long distance charges apply to calls placed from your home calling area to anywhere in the US Standard airtime charges apply. Credit card calls not included. **Night and weekend minutes:** 8pm to 6.59am Monday - Friday and Friday 8pm-Monday 6.59am long distance charges and taxes additional. Limited time offer. **600 anytime minutes:** Requires new activation on AT&T Digital Advantage or AT&T Regional Advantage \$39.99 or above calling plans with a signed two-year agreement. **\$35 waived activation fee:** Requires signed two-year agreement. You will be charged \$35 activation fee if signed two-year contract not received within 60 days of activation. Expires 4/13/02.

Parks

Childerty Park

506 McHenry Road
Acreage: 12.5 acres
Hours: sunrise to sunset
Amenities: restrooms, picnic tables, shelter, drinking fountain, play equipment, volleyball courts, nature areas, pavilion with electricity, barbecue grill

Northside Park

220 Glendale Ave.
Acreage: 3 acres
Hours: sunrise to sunset
Amenities: playground; baseball, softball and soccer fields

Chamber Park

251 N. Wolf Road
Acreage: 13 acres
Hours: sunrise to sunset
Amenities: picnic tables, shelter, playground, basketball courts, church, museum

Husky Park

Lee Street
Acreage: 5 acres
Hours: sunrise to sunset
Amenities: playground, basketball court

Heritage Park

222 S. Wolf Road
Acreage: 83 acres
Hours: sunrise to sunset
Amenities: playground; picnic tables; restrooms; shelter; drinking fountain; tennis courts; baseball, softball, soccer fields; basketball courts; ice skating rink

Meadowbrook Tot Lot

Nancy Lane
Acreage: 1 acre
Hours: sunrise to sunset
Amenities: playground

Malibu Park

Lakeview Drive
Acreage: 1 acre
Hours: sunrise to sunset
Amenities: playground, picnic tables, shelter

Horizon Park

378 Schoenbeck Road
Acreage: 10 acres
Hours: sunrise to sunset
Amenities: playground; restrooms; drinking fountain; baseball, softball, soccer fields; basketball court; ice skating rink

Mark Twain Gymnasium and Field

515 E. Merle Lane
Hours: Call for availability
Amenities: restrooms; drinking fountain; volleyball courts; baseball, softball field; basketball court

Pleasant Run Park

Pear Tree Lane
Acreage: 4 acres
Hours: sunrise to sunset
Amenities: shelter; playground;

Park districts

Wheeling Park District

333 W. Dundee Road, Wheeling
 60090

Telephone: (847) 465-3333

Web:

www.wheelingparkdistrict.com

Prospect Heights Park District

110 W. Camp McDonald Road,
 Prospect Heights

Telephone: (847) 394-2848

Web: www.phparkdist.org

Email: along@phparksdist.org

baseball, softball field; basketball court; nature areas

Denoyer Park

Waverly Lane
Acreage: 4.5 acres
Hours: sunrise to sunset
Amenities: nature areas

Tarkington Gymnasium and Field

310 S. Scott St.
Hours: Call for availability
Amenities: restrooms; drinking fountain; volleyball court; baseball, softball soccer fields; basketball courts

Pools

Aquatic Center

Community Recreation Center, 327
 W. Dundee Road
Amenities: outdoor water park; lap lanes; sand volleyball; adult spa; grassy tanning area; snack bar; picnic area; playgrounds in and out of the water; locker rooms; picnic tables; restrooms; drinking fountain; group events, rentals
Telephone: (847) 465-7665

Arctic Splash

Community Recreation Center 333
 W. Dundee Road
Amenities: indoors; zero depth leisure pool; lap pool; toddler slide; water drinking structures; deck observation area; men's, women's and family locker rooms; fitness and swim classes; rentals
Telephone: (847) 465-7674

Community & fitness centers

Community Recreation Center

333 W. Dundee Road
Amenities: Picnic tables; restrooms; shelter; volleyball courts; basketball courts; fitness center; indoor aquatic center; indoor walking, running track; preschool; nursery; adult and youth classes; pavilion; party/room rentals
Telephone: (847) 465-3333

Community Fitness Center

333 W. Dundee Road
Amenities: Computerized fitness equipment, StepMill, treadmills, variable resistance exercise

machines, Gravitron, exercise bicycles, free weights, Precor ellipticals, steppers, Concept II rower, personal trainers

Telephone: (847) 465-2943

Village Pavilion Senior Center

199 N. First St.

Age eligibility: 55 years and older

Services: AARP tax assistance, blood pressure checks, Caring Hearts friendly visitors, driver refresher class, Gatekeeper program, temporary handicapped permits, health screenings, information referrals; library lending program; medical form assistance; medical lending closet; RTA passes; subsidized cab program; support groups

Programs: Senior Net Program; classes; book reviews; bowling league; bridge, pinochle; crafts; discussion groups and educational forums; golf league; informational activities; clubs; movies; parties; chorus; luncheons; trips

Web: www.vi.wheeling.il.us

Telephone: (847) 459-2670

Email: njansen@vi.wheeling.il.us

Golf courses

Chey Chase Golf Course

1000 N. Milwaukee Ave., Wheeling

Number of holes: 18

Yardage: 6,608

Amenities: restrooms, club house, pro shop, lessons, locker rooms, showers, beverage cart, group outings, carts, bar/grill, banquet rooms, restaurant, frequent customer rewards

• Closed for the 2002 golf season due to renovations

Telephone: (847) 537-0082

Web:

www.wheelingparkdistrict.com

Old Orchard Gold Course

700 W. Rand Road, Mount Prospect

Number of holes: 18

Yardage: 6,119

Amenities: restrooms, club house, pro shop, lessons, restaurant, lounge, lockers, showers, carts, banquet facilities, meeting space, group outings, putting green

Reservations: (847) 255-2025

Rob Roy River Trails Golf Course

505 E. Camp McDonald Road,
 Prospect Heights

Number of holes: 9

Yardage: 3,022

Amenities: clubhouse, pro shop, bar/grill, driving range, banquet facilities, locker rooms, lessons, carts, 10-round pass discount

Reservations: (847) 253-4544

Web: rtpd.org

Email: Golf@rtpd.org

4 Generations Master Craftsmanship

Transform your dreams to reality with our Handcrafted, custom designed creations

*Specializing In
One-Of-A-Kind Designs*

**Expert jewelry
and watch repair**



Diamond setting

Engraving

Estate Jewelry

*18 kt. & 14 kt. gold,
& platinum*

Alval Jewelry

(Arlington Club Commons)

37 Huntington Lane, Wheeling

847-537-5333

HORIZONS CHILDREN'S CENTER

3316 Schoenbeck Road, Wheeling, IL 60090

847.459.1617, fax 847.459.1695

www.horizonchildcare.org



**A full service educational facility
Superior Child Care Since 1974**



NEW MOTHER'S DAY OUT PROGRAM!

- Programs include
- Infant - Full Day
- Toddler - Full Day
- 2-3 Year Olds - Full/Half Day
- Pre-School - Full/Half Day
- Kindergarten - Full/Half Day
- Before & After School
- Intergenerational Program
- Summer Camp - Ages 5-12
- Degreed Teaching Staff
- Nurturing Environment
- Gymnasium
- 3 outdoor playgrounds

Historic course to get modern improvements

BY EILEEN O. DADAY
Daily Herald Correspondent

Among the various revenue facilities operated by the Wheeling Park District is a historic gem now looking to become one of the premier public golf and banquet facilities in the Northwest suburbs.

Chevy Chase Country Club dates back to the 1920s and features a classic Tudor-styled clubhouse and an 18-hole golf course designed by noted course designer Thomas Bendalow, who designed the famed Medinah Country Club, among others.

Yet rather than rest on its historic charm, park district officials aggressively have gone forward with their plans to renovate the facility, bringing it up to modern standards without losing its classic look.

Wheeling voters agreed, voting in 1997 to save the facility from the wrecking ball and instead approved a tax increase to update the structure.

The clubhouse underwent a \$4 million renovation first, which park district officials unveiled in January 2000. Now officials have turned their sights to the golf course.

Chevy Chase Country Club

1000 N. Milwaukee Ave., Wheeling
Golf: (847) 537-0082
Banquets: (847) 465-2305

"As beautiful as the clubhouse is, the golf course will be even better," says Tom Weber, park board commissioner. "It's really exciting to see it all come together."

They began tearing up the old course in January. Work will cause it to remain closed during the 2002 season, and it is expected to reopen in 2003.

Improvements include a new storm water management system, with new irrigation pipes throughout the course and changing the topography of the course to channel water into areas out of play.

Each of the fairways will feature all new bent grass, while the greens will have new hole placements, and meet U.S. Golf Association guidelines with their mix of sand, gravel and top mix.

They also plan to add more water traps, including more creeks



The greens at the Chevy Chase Country Club offer golfers a chance to enjoy their sport in an historic setting that the Wheeling Park District hopes will be improved by a renovation project.

and ponds, while staying faithful to Bendalow's original design.

"We're taking the course up another notch, making it a high caliber course," says Karop Bavougian, executive director of the Wheeling Park District.

The course is located in a flood plain and had been prone to flooding, which prompted the overhaul, in part. Mostly,

Bavougian says, they wanted to give the "old, tired course" a facelift to and make it "one of the outstanding, premiere courses in the Chicago area."

As it is the course draws up to 34,000 rounds of golf per season, including a mix of league play, junior players and recreational golfers.

When planning the new look of

the golf course, Bavougian says they told designers to match the integrity of the course with the updated look of the clubhouse, which features floor-to-ceiling windows in its ballroom, its original chandeliers and woodwork, and gleaming hardwood floors throughout.

Various sized banquet rooms draw events of all sizes. The original Abbey room and the accompanying ballroom can accommodate up to 600 guests between them, while the Devonshire Room can hold 200, and the smaller, more intimate Gable Room another 80.

"Numbers of events definitely picked up after the renovations, and so did the size of events because we can accommodate more people now," says Wendy Rank, with the sales and catering department. "People are drawn to the ambiance; it doesn't look like your traditional banquet facility."

Backing her up are the numbers. In 1998, the year before the renovation, Chevy Chase drew 50 weddings. The year it reopened, 145 weddings took place and that was only a portion of the 500 private and corporate events booked.



\$39.99

600 Anytime Minutes

+

3000 Night & Weekend Minutes

Offer expires 4/30/02

FREE PHONE
with car charger, leather case and hands free head set.

We also carry
DISH Network, Sprint, Nextel.
And Many Accessories



\$39.99

1000 Anytime Minutes

\$19.99

100 Anytime Minutes

Offer expires 3/31/02

FREE PHONE
with car charger, leather case and hands free head set.

ADVANTEK WIRELESS

1315 Golf Rd. • Rolling Meadows

847-545-8255



\$49.99

Regional

3000 Anytime Minutes

\$19.99

60 Anytime + 500 Weekend Minutes

\$29.99

200 Anytime + Unlimited Weekend Minutes

Offer expires 3/31/02

FREE PHONE
with car charger, leather case and hands free head set.



MIL ZARN DAILY HERALD

More than a tavern, Bar Louie on Wheeling's Restaurant Row has spiced up its menu by offering blackened catfish and a Vesuvio melt sandwich.

Restaurant Row

34th Aero Squadron Restaurant
1070 S. Milwaukee Ave.

Telephone: (847) 459-3700

Fax: (847) 459-1251

Bar Louie Wheeling

313 N. Milwaukee Ave.

Telephone: (847) 279-1199

Fax: (847) 279-7877

Web: www.barlouieamerica.com

Benihana Restaurant

150 N. Milwaukee Ave.

Telephone: (847) 465-6021

Fax: (847) 465-6158

Web: www.benihana.com

Bob Chinn's Crabhouse Restaurant

393 S. Milwaukee Ave.

Telephone: (847) 520-3633

Fax: (847) 520-3944

Web: www.bobchinns.com

Buca di Beppo

304 N. Milwaukee Ave.

Telephone: (847) 808-9898



M. SCOTT MAHANKEY DAILY HERALD

Patrons play games at the Crawdaddy Bayou restaurant in Wheeling, enjoying Cajun flavors during a celebration of Mardi Gras.

Fax: (847) 808-0565

Buona Sera

102 S. Milwaukee Ave.

Telephone: (847) 229-0404

Fax: (847) 229-1780

Web: www.buonasera.com

Compass Rose Restaurant

1090 S. Milwaukee Ave.

Telephone: (847) 537-6710

Crawdaddy Bayou Restaurant

412 N. Milwaukee Ave.

Telephone: (847) 520-4800

Fax: (847) 520-4874

Web: www.crawdaddybayou.com

Cy's Crab House North

933 N. Milwaukee Ave.

Telephone: (847) 279-1700

Fax: (847) 279-1111

Don Roth's Blackhawk Restaurant

61 N. Milwaukee Ave.

Telephone: (847) 537-5800

Fax: (847) 537-5828

Web: www.donroths.com

Edwardo's Natural Pizza Restaurant

401 E. Dundee Road, Wheeling 60090

Telephone: (847) 520-0666

Fax: (847) 520-9314

Golden Chef

600 S. Milwaukee Ave.

Telephone: (847) 537-7100

Fax: (847) 537-1172

Hackney's In Wheeling

241 S. Milwaukee Ave.

Telephone: (847) 537-2100

Fax: (847) 541-9413

Web: www.hackneys.net

Le Francais Restaurant

269 S. Milwaukee Ave.

Telephone: (847) 541-7470

Fax: (847) 541-2043

Web: www.lefrancaisrestaurant.com

Leona's Restaurant

43 W. Dundee Road, Wheeling 60690

Telephone: (847) 229-8080

Fax: (847) 279-3913

Taqueria Alamo Restaurant

58 N. Wolf Road

Telephone: (847) 808-0188

Fax: (847) 808-0192

Tuscany Wheeling

550 S. Milwaukee Ave.

Telephone: (847) 465-9988

Fax: (847) 465-8446

Web: www.stefanirestaurants.com

Weber Grill Restaurant

920 N. Milwaukee Ave.

Telephone: (847) 215-0996

Fax: (847) 215-7733

Web: www.webergrillrestaurant.com



DAILY HERALD FILE PHOTO

Buca di Beppo restaurant in Wheeling has no problem opening its kitchen to student interns, expanding its offerings beyond the dining room.

Playful Paws™

A Day Care Center for Dogs

• 5,000 Sq. Ft. of Cage-Free Exercise and Play Space

• Attached Fenced-in Outdoor Recreation Area

• Living Room with Sofas, Television, Beds, Bones and Chew Toys

• Track & Agility Equipment

• Puppy Socialization and Basic Obedience Training

• Evening Training Classes Available



680 MILWAUKEE AVE
PROSPECT HTS, ILLINOIS 60070

PHONE (847) 419-1110

FAX (847) 419-9529

www.playfulpaws.com

Provider of recreation activities and leisure services for over 40 years

**WHEELING
PARK DISTRICT**



**Chevy Chase
Country Club**



AQUATIC CENTER

**WHEELING
PARK DISTRICT**



FITNESS CENTER



333 W. Dundee Rd., Wheeling
www.wheelingparkdistrict.com
847/465-3333

Restaurants mix marketing efforts

BY EILEEN O. DADAY
Daily Herald Correspondent

When you think of Wheeling, you probably think of restaurants. The tantalizing array of choices along Milwaukee Avenue make up what is known as "Restaurant Row."

Some of the Northwest suburbs' most popular restaurants are located on this strip, including Bob Chinn's Crabhouse Restaurant, Le Francais Restaurant, Hackney's in Wheeling and Don Roth's Blackhawk Restaurant, to name just a few.

Yet it was not until last summer that the restaurant owners thought to start marketing themselves together as a group, as "Restaurant Row."

"As the village of Wheeling becomes more pro-business, we've become more pro-active," says Jim Lederer, president of the Wheeling-Prospect Heights Chamber of Commerce and a former restaurant manager along Restaurant Row, now with Lovell's of Lake Forest. "A stronger, united 'Restaurant Row' promotes a stronger Wheeling."

In fact, Lederer says the 25 or so restaurants located on Milwaukee Avenue and nearby Dundee Road in Wheeling bring in millions of dollars of revenue to the village.

"They really drive the success of Wheeling, I think," Lederer says. "It's a neat area, that with a little more development, can bring even more success to Wheeling and to the restaurants."

One of the first development ideas they acted on was to break off into a subsection of the chamber to include restaurants, culinary schools, hotels and banquet facilities and liquor stores. They call themselves "Restaurant Row Hospitality Group."

In April they hope to unveil a new logo for their group which they plan to feature in combined marketing efforts. They also plan to publish their first Restaurant Row Hospitality Group Dining Guide.

One of the longest running and most successful of all the eateries in Restaurant Row is Bob Chinn's Crabhouse. Despite its individual success, restaurant officials see a stronger future in banding together with neighboring establishments.

"I think our strength is the



The gourmet offerings at Le Francais Restaurant are just part of the attractions on Wheeling's "Restaurant Row," which draws connoisseurs of fine and affordable dining from throughout the suburbs.

number of diverse restaurants," says Frank D'Angelo, general manager of Bob Chinn's. "When you have a lot of different choices in the area, it attracts more people."

Lederer likens the development of the dining area in Wheeling to that of north suburban Highwood in terms of where residents turn to for fine dining choices.

"We hope to make it an entertainment destination," Lederer

says. "The more choices people have, the more people we think it will attract."

Newest entries reveal the strength of the area's draw. In recent years the row has added Tuscany, an upscale Italian eatery; Benihana Restaurant; and Buca di Beppa, one of the hottest new trends in restaurant styles.

As the area looks to reinvent itself with renewed marketing efforts,

they do not want to lose sight of their historic past, says Cathy Parker, executive director of the chamber.

The area dates its origins back to 1837, when Wheeling resident Joseph Filkin built the village' first tavern, at Milwaukee Avenue and Dundee Road. Filkin's Stag Coach Tavern opened up and drew other establishments to locate near it.

Whether your idea of an exotic journey is INDIA or INDIANA.

Nightlife or wildlife.

Across the world or just across town. The Daily Herald helps

Suburban Chicago plan its vacations.



Going Places Sundays in the Daily Herald

To subscribe call 847-427-4333

Daily Herald

Big Picture Local Focus
dailyherald.com

How officials are dealing with cramped village hall

BY CASS CLIATT
Daily Herald Staff Writer

A town can't offer a growing list of services without outgrowing its facilities.

Wheeling may be half the size of Schaumburg and less than half the size of Arlington Heights, but village officials say they're proud to offer residents an equal caliber of support in public safety, utilities and infrastructure.

It means, however, that the village is experiencing a space crunch housing all of its services on Dundee Road.

Hoping to further improve the work it does for residents, the village is exploring revamping its village hall campus.

A \$50,000 contract with consultants FGM Inc. of Oakbrook is helping Wheeling leaders come up with ideas that could include relocating the permit office and other divisions of the fast-growing public works department, said acting Director of Public Works Guy Kolberg. The space needs study is also helping department managers look at whether to shift the police, fire and other departments on the village hall campus, expand the facilities or build anew.

Acting Village Manager James Grabowski said the focus of discussions has been relocating public works to a 10-acre parcel Wheeling owns on Hintz Road and reconfiguring the current village hall.

"No matter what services move or don't move, I don't think the residents will be affected negatively," Grabowski said. "It can only improve. We'll have more space to work in, and everyone should feel that affect and that we will be able to work better." The impetus for the project is the need for a new public works facility, officials said.

When village hall was built in the late 1970s, the public works crew had one mechanic, two people in the water department and three in the street department maintaining public facilities, officials said.

Today, there are 56 employees on the public works staff, 138 in the police and fire departments, and 17 in finance and administration, all working on the village hall campus.

That's in addition to the 15 employees promoting community development who had to set up shop down the block in the Wickes building. Three staff members work at the senior center.

"At one point, public works was technically a part of the village hall," Kolberg said. "The area that is currently the council chambers was the maintenance garage. As our needs grew, our space grew out of this campus."

The village's change to Lake Michigan water from a well system in the 1980s created the need for more mechanical and sophisti-



Judy Abruscato Robert Heer



Patrick Horcher Trevor Lehmann



Michael Horcher Dean S. Argiris

Your government

Village president

Greg Klatecki
(847) 459-2988

Village trustees

Judy Abruscato
(847) 541-8783

Robert Heer
(847) 541-4274

Patrick Horcher
(847) 459-8441

Trevor Lehmann
(847) 541-6700

Michael Horcher
(847) 541-3276

Dean S. Argiris
(847) 808-8418

Village clerk

Elaine Simpson
(847) 541-8692

Acting village manager

James A. Grabowski
(847) 459-2600

Village board meetings

7:30 p.m. on the second and fourth Mondays of each month at Village Hall, 255 W. Dundee Road.

Village attorney

James A. Rhodes
(847) 459-2606

Email: jrhopdes@vi.wheeling.il.us

Village prosecutor

Steven J. Handler
(847) 459-2616

Fire chief

Keith MacIsaac
(847) 459-2662

Email: kmacisaac@vi.wheeling.il.us

Police chief

John Popadowski
(847) 459-2632

Email: jpopadwoski@vi.wheeling.il.us

cated pumps and monitoring equipment, Kolberg said.

An engineering division was born from expanded development and the need to ensure quality of infrastructure, and a new capital projects unit followed that in 2000.

"Capital projects was created out of a need the village had due to its extremely ambitious capital improvement project schedule," Kolberg said.

"We're engaged now in annual street light improvements, pavement improvements and annual water system improvements, among numerous other smaller projects."

Wheeling has set aside \$750,000 in its tentative budget the village could use to design a new village hall and public works facility, Kolberg said. The amount is based on a 1995 feasibility study that explored

space needs.

"Nothing is decided," Grabowski said. "What we're trying to do is find the most cost effective plan to locate the different departments, or relocate them as the case may be, to make this work."

CLIP AND SAVE

\$ WAR SOUVENIRS WANTED \$

Buying U.S., German, Japanese -
Civil War, WW1, WW2
Medals, Insignia, Uniforms, Weapons, etc.

TOP CASH PAID - ESTABLISHED LOCATION
35 Yrs. In Chicagoland Area
Bring to Us - Or Will Come to You

Dugout Militaria Ltd.
22 W. Busse Ave., Mt. Prospect, IL
847-392-6838 or 630-660-5544
Hours: Tues-Fri 11am-7pm, Sat 11am-5pm,
Sun & Mon Closed

CLIP AND SAVE

Leaky Basements?

We provide
honest quotes,
polite & prompt
service

FOUNDATION
CRACKS REPAIRED



Repairs are permanent
because we epoxy seal
cracks from the inside
PLUS pressure seal from the
outside! We install drain tile
systems and sump pumps!



A family-owned and
operated business since
1983 for all your concrete
repairs. Our reputation
speaks for itself; many satisfied
customers!

We RAISE concrete patios, sidewalks,
stoops and drive ways. A cement mix
is pumped beneath the walks to elevate
and level to its original placement.

(847) 537-4200

American Waterproofing Co.

Concrete Raised

Changing Jobs?

What should you do with your retirement plan distribution?

Don't lose any of your savings to taxes or penalties. I can help you understand your options and choose the one that's right for you.

Call today to arrange a free consultation.

Tom Thompson

848 Wheeling Road
Wheeling, IL 60090
Bus 847-808-0268 Fax 847-808-0361
800-799-5032

www.edwardjones.com

Member SIPC

Edward Jones

Serving Individual Investors Since 1871

After three years, Taste festival becoming a tradition

BY EILEEN O. DADAY
Daily Herald Correspondent

The premise was simple for the Taste of Wheeling: Feature a sampling of the village's renowned restaurants and residents will come in droves.

That's where members of the village's special events commission began when designing the 3-year-old festival that has become a favorite tradition for village residents and those beyond Wheeling.

The shindig takes place every year on the Fourth of July. The festival grounds sprawl out in front of the Wheeling Park District's community recreation center, adjacent to the Wheeling village hall.

Festival Chairman Judy Abruscato is like a kid in a candy store when she describes the festival's many attractions.

"Oh, we're going to have fun," says Abruscato, a Wheeling village trustee and branch president of Corus Bank in Wheeling. "I get excited thinking about it." The Taste features more than a dozen restaurants, a half dozen musical groups, countless games and play stations and just good old-fashioned fun.

One thing it does not feature, however, is alcohol. Abruscato is firm on that point. While she admits it was something of a gamble at first, few have com-

Tasty lineup

These are the expected entries in this year's Taste of Wheeling:

- Wa-Pa-Ghetti's Pizza
- Joe's Pizza
- Bob Chinn's Crab House
- Golden Chef
- Hackney's
- I Am Siam
- Weber Grill Restaurant
- Mr E.'s
- El Famous Burrito
- Taqueria Alamo
- Lupita's Bakery
- Sauer's Bakery

plained over the years, Abruscato says.

"We haven't had it since day one," Abruscato says. "It's a family day, designed for the kids and without it we still draw nearly 10,000 people."

Affording extra security figured into her decision, she says, but mostly it was the principle. She knew the village could buck the trend started by other Northwest suburban festivals that offer beer gardens and that they still could have a successful event.

"People look forward to it," Abruscato says. "They like having a day



MIKE SEITZ/DAILY HERALD FILE PHOTO

The fresh tastes of summer and fireworks are the main offerings at the annual Taste of Wheeling, which is held on the Fourth of July.

that they can spend with their kids and not have to worry about other people getting out of hand."

And it's a full day, at that. Entertainment this year will feature the Jesse White Tumblers along with the 60s band, Jimmy Rogers and the Mauds, the local band Jake and the Moneymakers, the Cubs Dixieland band and the 18-piece big band

sound of the Larry Bemben orchestra. Children can romp between three interactive play stations, including the moonwalk and other bouncing attractions, a baseball and football throw sponsored by the Knights of Columbus. Other attractions will be face-painting, clowns and a magician.

The Taste serves as an opening

act to the village's Fourth of July parade, which steps off at 6 p.m. right in front of the Taste, at Dundee and Wheeling roads.

After the parade, residents can return to the festival for dinner and more entertainment. A \$30,000 fireworks display caps the evening. Residents can watch the fireworks right from the festival grounds.

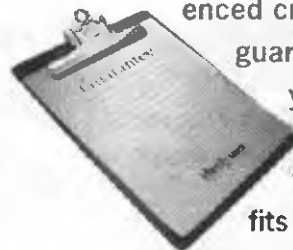
that drip
drip
drip
dripping faucet kept
me up until 4AM.

Yeah, we can fix that.
Handyman Connection.

CALL TODAY
(847) 202-3232

Handyman CONNECTION.

Nothing brings a smile to your face like taking care of those nagging home repairs. From updating your bathroom, to painting your family room, to repairing that crack in the wall, Handyman Connection can handle it all. Plus, all work is done by experienced craftsmen and guaranteed for one year. So, stop worrying. Call Handyman Connection today for an appointment that fits your schedule.



(847) 202-3232

Handyman CONNECTION	Handyman CONNECTION	Handyman CONNECTION	Handyman CONNECTION
SAVE	SAVE	SAVE	SAVE
\$15	\$25	\$50	\$100
on any work over \$80	on any work over \$100	on any work over \$250	on any work over \$750

Offer subject to change without notice. Not valid with any other offer. Present coupon after evaluation and approval. Handyman Connection is a Locally Owned & Locally Operated Business.

Village looks back in time for future of its downtown

BY CASS CLIATT

Daily Herald Staff Writer

Wheeling wants to take a step forward in its development while taking a look back in history.

The village is a lifetime away from the bygone era when horse-drawn carriages and high-button boots got people where they needed to go in the Northwest suburbs.

Yet village officials say those more provincial times had a lot to offer in terms of a flourishing retail market and housing trade based on proximity and convenience.

To reap the benefits of those times, the village is considering the creation of a central town hub, reminiscent of the market squares and business districts of the 19th century. It wouldn't be your grandmother's downtown, said Wheeling's Economic Development Director William D. Whitmer.

A \$75,000 grant from the Regional Transportation Authority is helping Wheeling develop a concept for a central retail district using a commuter rail station as its focal point.

The district would follow a recent suburban trend of redeveloping downtown areas around Metra rail stations, benefiting from rail improvements that are expected to double the number of trains traveling through the area by 2005.

"With these improvements, it's going to cause people to take a different look at Wheeling in terms of how easy and how accessible it is," Whitmer said.

"If you're calling this a downtown, it's a downtown by 2002 standards that may not have some of the physical features that a traditional downtown might have had,"

he said. "Those old downtowns happened in a day and age where horse-and-buggy transportation and pedestrians were more prevalent. In the suburbs, you have to consider the automobile and build differently."

The village is considering whether it makes sense for more retail uses around its Metra station and whether increased train traffic would encourage people to live there without cars.

Metra expects that recent federal approval to add a second track to sections of its North Central Service from Antioch to Chicago will increase the number of trains on the line from 10 to 22 a day.

The double tracking promises to alleviate some of Wheeling's rush-hour "gridlock" and to open the village to a concentrated market of rail riders, officials said.

"Could we have individuals who are enticed by the ease of using that commuter station and wanting to be around that station?" Whitmer said. "This grant from the RTA will let us do a study of possible land uses around that station to give us the answers. The uses could be retail, it could be residential, it could be service."

Arlington Heights officials have made a similar strategy work for them with a downtown revitalization that incorporated improvements to a commuter station in 2000.

Renovations of Metra stations in Mount Prospect, Deerfield and Palatine set the trend in earlier years, reflecting a move to redeveloped downtowns in those suburbs.

Metra official Frank Malone said it's all evidence of history repeating itself.

"That's the way it was originally,"

Malone said after the development of the Arlington Heights commuter station. "Train stations everywhere were pretty much in the center of town and, in a sense, we're getting back to that. More and more communities are realizing that downtowns have a purpose."

For Arlington Heights, a multi-year downtown revitalization gave the village a fresh start, Mayor Arlene Mulder said.

"Your downtown becomes your curb appeal and I think a community is often viewed by its downtown," she said. "And particularly where there's a train track where thousands and thousands of people ride by every day, it creates an image of our village."

Arlington Heights decided on a downtown design with a historical feel. "It becomes a gathering place, and I think it gives people a sense of pride that they can gather there," Mulder said. Wheeling would use to its advantage the location of its train station near many of the village's recreational facilities, Village President Greg Klatecki said.

"We could develop residential around the train station and it would be easy on and easy off and it's located so well that it's close to the park district," Klatecki said. "It has the recreation center, the indoor pool, the outdoor pool."

Although the studies of whether to pursue a Wheeling downtown are still in the earliest preliminary stages, village officials hope they can incorporate the results of their grant study into a comprehensive plan already in progress.

The plan will set a development agenda for the village for the next 20 years. "We have an opportunity here and I think it would be a plus to do that," Klatecki said.

"Fender Benders" May Cause Serious Injuries

Free Report Reveals How Even Minor Accident Injuries Can Have Major Health Consequences.

Wheeling, IL - Minor injuries from car accidents are often misunderstood. A recent free report reveals how minor accidents can cause hidden injuries that may take weeks, months, even years to surface. To receive the Free Report sent to you by mail, Call Toll-Free 1-800-450-3175

24 Hour Recorded Message.
Sponsored by Dr. McNeela

Libraries

Indian Trails Public Library

355 South Schoenbeck Road,
Wheeling 60090

Telephone: 847-459-4100

TDD: 847-459-5271

After-hours reference: 847-459-4102

Web: www.itpld.lib.il.us

Staff

Director: Tamiye Trejo Meehan

Email: tmeehan@itpld.lib.il.us

Adult services: Sally Decker Smith

Email: ssmith@itpld.lib.il.us

Circulation: Barbara Czechorski

Email: bczechor@itpld.lib.il.us

Computer services: Mike Jackiw

Email: mjackiw@itpld.lib.il.us

Outreach: R. Christine Gibson

Email: creading@itpld.lib.il.us

Technical services: Wei Jeng-Chu

Email: wjengchu@itpld.lib.il.us

Youth services: Kathleen Simonetta

Email: ksimonetta@itpld.lib.il.us

Prospect Heights Public Library

12 N. Elm St. Prospect Heights 60070

Telephone: (847) 259-3500

TDD: (847) 259-9684

After-hours reference: (847) 259-3501

Web: www.phl.alibrary.com

Staff

Director: Dr. William McCully

Email: wmccully@phl.alibrary.com

Adult services: Alexander C. Todd

Email: atodd@phl.alibrary.com

Youth services: Sue Seggeling

Email: sueann@phl.alibrary.com

Technical & automated services: Bin Zhao

Email: binzhao@phl.alibrary.com

Circulation & audio visual services:

Sharon Daly

Email: daly@phl.alibrary.com

Community services: Linda Stahnke

Email: lstahnke@phl.alibrary.com

Utilities

Commonwealth Edison

Telephone: (800) 334-7661

Web: www.ucm.com

Nicor Gas

Telephone: (888) 642-6748

Web: www.nicorinc.com

Ameritech

Telephone service: (800) 244-4444

Cable service: (800) 848-2278

AT&T Cable Services of Illinois

Telephone: (888) 824-2273

Water service

Village of Wheeling

Telephone: (847) 459-2624

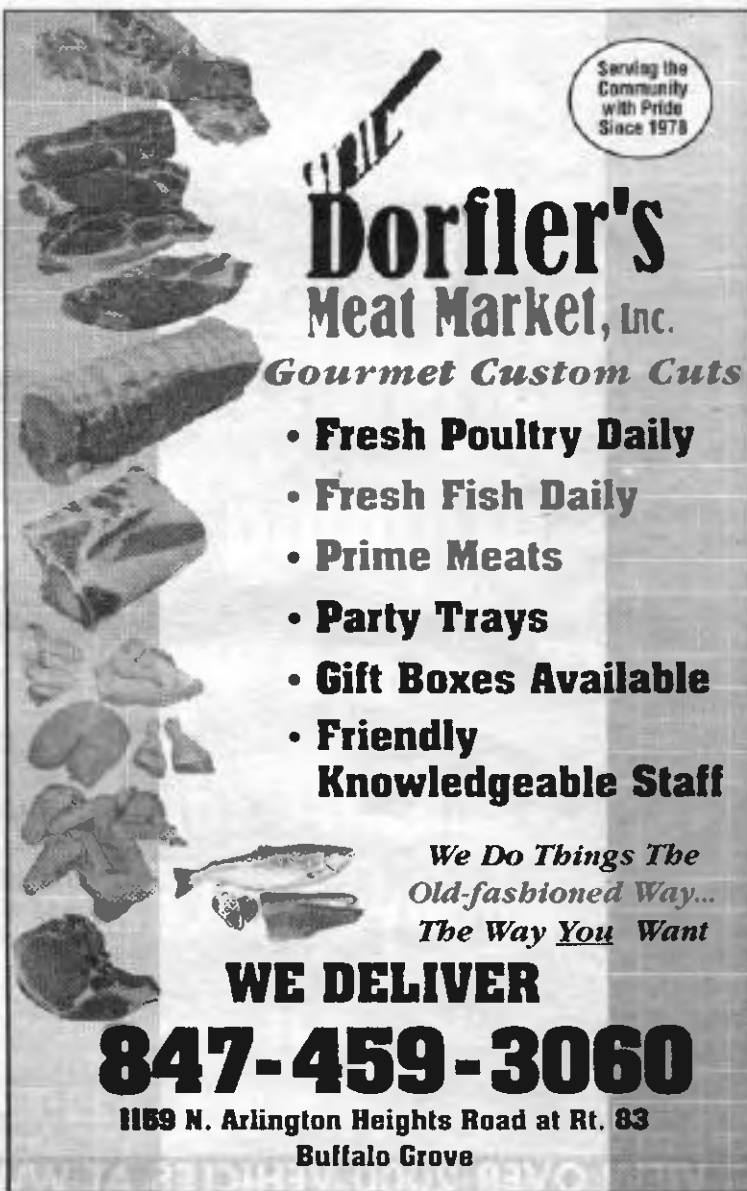
Wastewater treatment

Metropolitan Water Reclamation

District of Greater Chicago

Telephone: (312) 751-5600

Web: www.mwrdgc.dis.il.us



Serving the Community with Pride Since 1978

Dorfler's Meat Market, Inc.

Gourmet Custom Cuts

- Fresh Poultry Daily
- Fresh Fish Daily
- Prime Meats
- Party Trays
- Gift Boxes Available
- Friendly Knowledgeable Staff

We Do Things The Old-fashioned Way... The Way You Want

WE DELIVER

847-459-3060

1159 N. Arlington Heights Road at Rt. 83
Buffalo Grove



For A Better Deal In The Wheeling Area,



Ya Gotta Go To
Grossinger



Our Service Team

1000 NEW & USED VEHICLES!



Our Sales Team



EXCLUSIVE OFFER TO WHEELING RESIDENTS!

COME IN FOR ANY SERVICE AND RECEIVE
1 FREE AUTO BUTLER APPLICATION! A \$69.95 VALUE!

Auto Butler is the revolutionary paint polishing system that will protect your vehicles paint, keeping it looking showroom new for years longer!*

WE WANT TO BE YOUR NEIGHBORHOOD CHEVY DEALER!

Grossinger CHEVROLET

We'll Be There!

151 E. LAKE COOK RD. PALATINE • 847-359-7700

AT THE CORNER OF LAKE COOK RD. AND RAND RD. (RT 12)

**Se Habla
Español**



**JUST ASK FOR CESAR
JAZMIN OR JAVIER**

*Offer expires 4/20. Limit 1 application per customer

VIEW OVER 2000 VEHICLES AT WWW.GROSSINGER.COM

GM QUICK LUBE

- Drain & fill engine with Valvoline oil
- Replace oil filter with genuine GM filter
- Work done by GM trained technicians

\$19.95

plus tax & shop supplies

**SERVICE WHILE YOU WAIT!
GUARANTEED IN 29
MINUTES OR LESS!**



Please present coupon when order is written.

We'll Also Wash Your Vehicle • Check Wipers • Top Off All Fluids • Check Tire Pressure... Free of charge!

"It raises us to another level because no one ever thought that we could sell housing like that in Wheeling"

Greg Klatecki, village president

Village constructs higher standard

New upscale housing development helps to improve Wheeling's reputation regionally

BY CASS GLIATT
Daily Herald Staff Writer

Set against a backdrop of woodlands on Wheeling's north side, manicured lawns edge the stone facings outside the Park Point condominiums.

Gables shadow the top-floor windows on the two buildings that rise above nearby Buffalo Creek. Inside, lofty 9-foot ceilings are among the luxury amenities that have been attracting home buyers from Chicago, Morton Grove, Skokie, Highland Park, and up and down the North Shore.

This is not just another housing development.

This is the new face of Wheeling.

Elected officials, real estate professionals and developers agree the village is in the midst of a transformation clearly reflected in the upscale flavor of the housing.

Shaking off its reputation as a "low-cost, low-class suburb," Wheeling is beginning to sell more homes in the \$300,000 to \$400,000 range, officials say.

Building village pride

More developers are interested in building in Wheeling, and homeowners are taking pride in adding value to their own property.

Village President Greg Klatecki says Wheeling has become a place where people want to live and want to stay.

The construction of Park Point on 6 acres off of McHenry Road epitomizes that.

"If you look at Mark Smith's development, you will see the quality is unbelievable," Klatecki said.



BOB CHWEDYK/DAILY HERALD

Construction is almost complete on the second of three buildings that will make up the upscale Park Point condominiums, called the gem of housing development in Wheeling.

"And he is one of Wheeling's own. He's part of the whole thing happening here."

Mark Smith of Smith & Sons Inc. has built the first of two phases of the Park Point condominium complex on the 600 block of McHenry Road, selling many units in the range above \$350,000 to \$400,000.

With one building 95 percent sold and a second building half sold, Smith plans to break ground in the spring on the last of three 32-unit structures.

"It raises us to another level

because no one ever thought that we could sell housing like that in Wheeling," Klatecki said.

That's exactly why Smith decided to build in Wheeling, he said.

Smith, a resident in the village for more than 20 years, was tired of hearing people in the development community say that Wheeling wasn't good enough for upscale development, he said.

Real estate agents point out that Wheeling homes — including townhouses, coach homes and condos — commonly sold in the

\$160,000 range when Smith began to develop Park Point in 1999.

"Wheeling had a reputation of, 'Oh, that's Wheeling' in the development circles I'm in," Smith said.

"Why was that being said? Unfortunately, there was a lack of vision in Wheeling and there was low self esteem, and I hate to say that because I love Wheeling. I got tired of it."

In 1999, Wheeling had barely begun its streetscape beautification efforts and the aggressive

schedule of capital improvement changing the look of Wheeling.

Since then, One Milwaukee Place has opened 144 more dominions in a multi-phase project in Wheeling, selling homes up to the \$240,000 range.

Work on the River Mills Crossing subdivision of townhouses and condominiums is also under way on Milwaukee Avenue. On Hintz Road, the Avalon-South development of detached homes has gone through several construction phases and a number of smaller developments have emerged, including proposals for homes on South Milwaukee and Cornell Court.

That's aside from the remodeling permits residents and developers bought from the village last year to beautify and add value to existing homes.

"It's rapidly changing," Klatecki said. "Wheeling has a rare opportunity to see a magnitude of change of what I would say the better."

Timing is ripe

Real estate agents say Wheeling is riding an upswing of an aging population in the suburbs, also a trend among home buyers to look for nice homes near transportation.

"A lot of people, when they wanted to have bigger homes before, they had to look farther west (at) Lake Zurich, Fox Grove, Cary and that area," Scott Allbright of Re-Max Suburban said.

"But any time you can get newer construction where you can get more accessible to the trail work and good schools, I think the demand is there, and developers are taking advantage of that."

Also, retirees are interested in selling their larger homes and finding condominiums or townhouses that are convenient for social activities and shops.

Wheeling's Metra station is attracting empty nesters in touch with the city in Chicago, while providing a link between the recently married couple's suburban home and the busyness of the city, Allbright said.

"What I think," Smith said, "is that the retirees, who we have a lot of, are selling larger homes they're looking for a nice quality development in the area."

What they once saw as a place that was "too affordable," now has become a good value — "A nice community, a nice park district and good schools," Smith said.

The retirees settle in Wheeling.



At left, the fine fixtures and furnishings in this contemporary model of a condo at Wheeling's Park Point condominiums on McHenry Road fetched a price of \$450,000 from a North Shore resident impressed with what the village has to offer. Park Point also offers more traditional models of its condominiums, right, for empty nesters hoping to live life more simply.



BOB CHWEDYK/DAILY HERALD



BOB CHWEDOR/DAILY HERALD

Developer Mark Smith says his dedication to preserving the woodlands surrounding his Park Point condominiums in Wheeling is one reason village officials say he sets the new standard for housing development in town.

with disposable income they like to spend close to home, and it creates a cycle of economic development that feeds the housing revolution.

Housing cycle feeds

Local spending promotes the success of retail outlets and commercial enterprise, which leads to even more housing development, said Wheeling's Director of Economic Development William D. Whitmer.

"When a business, regardless of whether it's a large corporation or a small company, decides to move to expand or to break into a new market, they realize they need to find employees," Whitmer said. "And one of the features that those employees need is housing."

Wheeling can lure employers because it's able to offer diverse housing stocks that match different pay scales, Whitmer said.

The average sale price for single family homes last year in Wheeling was \$214,000, and townhouses sold for an average of \$181,000.

Condominiums sold for an average of \$128,000 and coach homes for \$143,800, according to the Multiple Listing Service of Northern Illinois.

The single family homes that sell for about \$500,000 and the \$400,000 condominiums at the new Park Point are at the higher end of the spectrum.

"We've got manufactured housing in spots that's pretty affordable, up to single-family detached units that are going in the neighborhood of half a million dollars," Whitmer said.

"I know we're not too far from communities that their housing stock exceeds millions at the high end of the spectrum ... but we have a lot of different types of housing to offer."

And Wheeling thinks it has no place to go but up.

"We are making it clear to everyone else who comes to us that the standard has been set by Park Point," Village Manager Klavec said.

"You see a quality there that is rare in the suburbs and rare in Wheeling. Everyone else has to meet that standard."



DANIEL WHITE/DAILY HERALD FILE PHOTO

The Kingsport Village North subdivision in Wheeling, home to growing families, is an example of the diverse types of housing the village offers to empty nesters, single people and families.

Public schools

Wheeling Elementary District 21

Administrative building
999 W. Dundee Road, Wheeling 60090
Telephone: (847) 537-8270
Superintendent: Bud DesCarpentrie
E-mail: superintendent@d21.k12.il.us
Web: www.d21.k12.il.us

Cooper Middle School

1050 W. Plum Grove Circle, Buffalo Grove 60089
Telephone: (847) 520-2750
Homework hot line: (847) 520-2750 (after 4:15 p.m.)
Principal: Kathy Schoenwetter
E-mail: kschoenw@d21.k12.il.us
Asst. principal: Carrie McCulley
Dean of students: David Palzet
Mascot: Cobra
Colors: green and gold
Enrollment: 749
Web: www.cooper.d21.k12.il.us

Holmes Middle School

221 S. Wolf Road, Wheeling 60090
Telephone: (847)520-2790
Principal: Tom Torchedo
E-mail: ttorched@d21.k12.il.us
Asst. principal: Martin Hopkins
Deans of students: Arthur Mildenberger and Mary Bhardwha
Mascot: Hornet
Motto: Learning always and all ways.
Colors: maroon and gold
Web: www.holmes.d21.k12.il.us
Enrollment: 911

London Middle School

1001 W. Dundee Road, Wheeling 60090
Telephone: (847) 520-2745
Homework hot line: (847) 520-2745
Principal: James Parker
E-mail: jparker@d21.k12.il.us
Asst. principal: Peter Daleske
Dean of students: Suzanne Shultz
Mascot: Lightning
Motto: Striking toward excellence
Colors: Purple and silver
Web: www.london.d21.k12.il.us
Enrollment: 799

Field Elementary School

51 St. Armand Lane, Wheeling 60090
Telephone: (847) 520-2780
Principal: Lavonne Knapstein
E-mail: lknapste@d21.k12.il.us
Mascot: Freddie the Falcon
Motto: Striving for excellence
Colors: blue and white
Web: www.field.d21.k12.il.us
Enrollment: 581

Frost Elementary School

1805 Aspen Drive, Mount Prospect 60056
Telephone: (847) 803-4815
Principal: Greg Crocker
E-mail: gcrocker@d21.k12.il.us
Mascot: Flying Falcons
Colors: blue and white
Web: www.frost.d21.k12.il.us
Enrollment: 588

Hawthorne Academy

200 Glendale St., Wheeling 60090
Telephone: (847) 465-7290
Principal: Jason Klein
E-mail: jklein@d21.k12.il.us
Motto: Eruditio est potentia
Colors: crimson and white
Web: www.hawthorne.d21.k12.il.us
Enrollment: 42

Kilmer Elementary School

655 Golf View Terrace, Buffalo Grove 60089
Telephone: (847) 520-2760
Principal: Kim Zinman
E-mail: kzinman@d21.k12.il.us
Mascot: Cougar
Motto: Parents and teachers working together to make Kilmer School a great place to learn, grow and play
Colors: Green and white
Web: www.kilmer.d21.k12.il.us
Enrollment: 422

Longfellow Elementary School

501 S. Arlington Heights Road, Buffalo Grove 60089
Telephone: (847) 520-2755
Principal: Debra Serbin
E-mail: dserbin@d21.k12.il.us
Mascot: Longhorn
Motto: Once a longhorn, always a longhorn
Colors: red, white and blue
Web: www.longfellow.d21.k12.il.us
Enrollment: 411

Poe Elementary School

2800 N. Highland Ave., Arlington Heights 60004
Telephone: (847) 670-3200
Principal: Pam Lindberg
E-mail: plindber@d21.k12.il.us
Mascot: Panther
Colors: blue and orange
Web: www.poe.d21.k12.il.us
Enrollment: 444

Riley Elementary School

1209 Burr Oak Drive, Arlington Heights 60004
Telephone: (847) 670-3400
Principal: Ed Searing
E-mail: esearing@d21.k12.il.us
Mascot: Ram
Motto: A great beginning for tomorrow's world
Colors: blue and white
Web: www.poe.d21.k12.il.us
Enrollment: 621

Tarkington Elementary School

310 Scott St., Wheeling 60090
Telephone: (847) 520-2775
Principal: John Patti
E-mail: jpatti@d21.k12.il.us
Mascot: Tiger
Motto: Don't settle for less, Tarkington's the best
Colors: blue and white
Web: www.tarkington.d21.k12.il.us
Enrollment: 470

Twain Elementary School

515 E. Merle Lane, Wheeling 60090
Telephone: (847) 520-2785

Principal: Gwendolyn Gage
E-mail: ggage@d21.k12.il.us
Mascot: Eagle
Motto: Soaring towards excellence
Colors: blue and gold
Web: www.twain.d21.k12.il.us
Enrollment: 532

Whitman Elementary School

133 S. Wille Ave., Wheeling 60090
Telephone: (847) 520-2795
Principal: Ralph Cook
E-mail: rcook@d21.k12.il.us
Mascot: Bulldog
Motto: We can't hide our Whitman pride
Colors: blue and green
Web: www.whitman.d21.k12.il.us
Enrollment: 792

Prospect Heights Elementary District 23 Administration Office

700 N. Schoenbeck Road, Prospect Heights 60070
Telephone: (847) 870-3850
Superintendent: Ronald Bearwald
canderson@d23.org
Web: www.d23.n-cook.k12.il.us

MacArthur Middle School

Schoenbeck & Palatine roads, Prospect Heights 60070
Telephone: (847) 870-3879
Principal: Robert DiVirgilio
E-mail: rdvirgilio@d23.org
Asst. principal: Michael Keeney
Mascot: Maruader
Colors: red and black
Web: www.d23.org/macarthur
Enrollment: 570

Eisenhower Elementary School

Schoenbeck and Camp McDonald roads, Prospect Heights 60070
Telephone: (847) 870-3875
Principal: Robert Marshall
E-mail: rmarshall@d23.org
Mascot: Eagle
Motto: Soar like an eagle
Colors: red and white
Web: www.d23.org/eisenhower
Enrollment: 350

Ross Elementary School

700 N. Schoenbeck Road, Prospect Heights 60070
Phone: (847) 870-3868
Principal: Sharon Warner
E-mail: swarner@d23.org
Motto: Be safe, respectful and responsible
Colors: red and white
Web: www.d23.org/ross
Enrollment: 300

Sullivan Elementary School

700 N. Schoenbeck Road, Prospect Heights 60070
Telephone: (847) 870-3865
Principal: Betsy Muir
E-mail: bmuir@d23.org
Mascot: Cardinal
Colors: red and white
Web: www.d23.org/sullivan
Enrollment: 340

Come and be Dazzled.
by the **Largest and Most Beautiful Selection...**



... of Evening Attire, Ballroom Gowns, Mother-of-the-Bride & Groom Dresses, Sportswear, Daytime Dresses & shoes in the Chicagoland area in all sizes.

CHIC IS BOUTIQUE UNIQUE
Specializing in larger sizes.
Sizes 4-18 Sizes 12W - 34W

ak Mill Mall
7900 N. Milwaukee Ave., Niles, IL
47-965-7740
M, Tu, Th 10-8; W, F 10-6; Sa 10-3:30, Sundays 12-5

A.B.C. Wireless
1101 Mt. Prospect Plaza (Central & Rand Rd.)
847-394-1111
OFFERS END MARCH 31, 2002

Additional Plans Available **OPEN 7 DAYS A WEEK**

<p>VOICE STREAM FREE PHONE 1 YEAR PLAN \$49.99 - Regional Plan 3000 ANYTIME MINS MONTHLY Includes IL, IN, OH, WI, IA, MI, MN</p> <p>NATIONWIDE RATE PLANS \$19.99 - 60 M-F - 500 WEEKEND MINS \$29.99 - 200 M-F - UNLIMITED WEEKEND MINS 500 - TEXT MESSAGES/MONTHLY \$39.99 - 500 M-F - UNLIMITED WEEKEND MINS</p> <p>NATIONWIDE FAMILY PLAN \$69.99 - 2 PHONES 800 M-F MINS - UNLIMITED WEEKENDS & UNLIMITED VOICESTREAM TO VOICESTREAM CALLING \$10/MONTHLY PER ADDITIONAL LINE (UP TO 5)</p> <p>DISH NETWORK Free dish system and up to 4 free receivers installed. Or Get a free dish system with one receiver for only 22.99/mo installed.</p>	<p>AT&T 1 YEAR PLAN FREE NOKIA PHONE</p> <p>LOCAL PLAN \$29.99-250 peak-1,000 off peak \$39.99-400 peak-3,000 off peak \$49.99-700 peak-3,000 off peak</p> <p>REGIONAL PLAN *\$29.99-120 peak-1,000 off peak *\$39.99-250 peak-3,000 off peak *\$49.99-700 peak-3,000 off peak</p> <p>AT&T 2 YEAR PLAN FREE NOKIA PHONE & FREE ACTIVATION</p> <p>LOCAL PLAN \$29.99-250 peak-2,000 off peak \$39.99-600 peak-3,000 off peak \$49.99-1050 peak-3,000 off peak</p> <p>REGIONAL PLAN *\$29.99-120 peak-2,000 off peak *\$39.99-375 peak-3,000 off peak *\$49.99-600 peak-3,000 off peak</p> <p>*Regional plans includes no roaming in IL, IN, WI, OH, MI & MN. Long distance included</p>
--	--

WE ALSO CARRY CINGULAR, MCI, PRIMECO, SPRINT, NEXTEL, VERIZON

Check out coming attractions in Time out!

High schools

Northwest Suburban High School District 214

Administrative building
2121 S. Goebbert Road, Arlington Heights
Telephone: (847) 718-7600
Superintendent: Elizabeth Ennis
E-mail: lennis@dis214.k12.il.us
Web: www.dist214.k12.il.us

Wheeling High School

900 S. Elmhurst Road, Wheeling
Telephone: (847) 718-7000
Principal: Dorothy "Dottie" Sievert
E-mail: dsievert@dist214.k12.il.us
Assoc. principals: Nancy Holman, Kelvin Lane
Mascot: Wildcat
Colors: blue and yellow
Enrollment: 749
Web: whs.dist214.k12.il.us

Buffalo Grove High School

1100 W. Dundee Road, Wheeling
Telephone: (847) 718-4000
Principal: Carter Burns
E-mail: cburns@dist214.k12.il.us
Assoc. principals: Ray Martinez, Janet Reed
Mascot: Bison
Colors: orange and blue
Enrollment: 2,103
Web: bghs.dist214.k12.il.us



MARK WELSH/DAILY HERALD

The Wheeling High School homecoming parade, brought back to life in October 2000 after a years-long hiatus, winds its way through streets near the school at 900 S. Elmhurst Road. The theme parade, typically held in October, incorporates various groups from the school.

Private schools

Our Lady of Perpetual Help School

1123 Church St. Glenview 60025
Telephone: (847) 724-6990
Type: parochial (Catholic)
Principal: Amy Mills
Enrollment: 1,000 students
Serves grades: K-8
Web: www.olph-il.org

St. Alphonsus Liguori

411 N. Wheeling Road, Prospect Heights 60070
Telephone: (847) 255-5538
Type: parochial (Catholic)
Principal: Donald Kellen
Enrollment: 341
Serves grades: K-8
Information contact: Jeanne Vallem
Web: www.saintalphonsus.com

St. James School

821 N. Arlington Heights Road, Arlington Heights 60004
Telephone: (847) 255-6746
Type: parochial (Catholic)
Principal: Richard McCafferty
Enrollment: 845
Serves grades: K-8
Recent awards/achievements: robotics Program, basketball championships
Information contact: Richard McCafferty
Web: www.stjames.ws

St. Viator High School

1213 E. Oakton St., Arlington Heights 60004
Telephone: (847) 392-4050
Type: parochial (Catholic)
Principal: Patrice Johannes
Enrollment: 994
Serves grades: 9-12
Recent awards/achievements: 53 Illinois State Scholars and 6 National merit Finalists in 2002
Information contact: JoAnne Francis
Web: www.viator.k12.il.us

St. Mary Catholic Elementary School

50 N. Buffalo Grove Road, Buffalo Grove 60089
Telephone: (847) 459-6270
Type: parochial (Catholic)
Principal: Gary Campione
Enrollment: 668
Serves grades: preschool-8
Information contact: Gary Campione
Email: garycampione@hotmail.com
Web: www.stmarybg.org

Our Lady of the Wayside

432 W. Park St., Arlington Heights 60005
Telephone: (847) 253-5353
Type: parochial (Catholic)
Principal: Alan Musial
Enrollment: 755
Serves grades: preschool-8
Recent awards/achievements: Blue Ribbon School of Excellence
Information contact: Alan Musial

E-mail: olwvschool@aol.com

Web: www.olwparish.org

St. Catherine Laboure

3425 Thornwood Ave., Glenview 60025-1025
Telephone: (847) 724-2240
Type: Parochial (Catholic)
Principal: Laurie Konicek
Enrollment: 325
Serves grades: preschool-8
Recent awards/achievements: First place in district spelling bee, boys basketball team took first place, quiz bowl, art contest
Information contact: Laurie Konicek

St. Peter Lutheran School

111 W. Olive, Arlington Heights 60004
Telephone: (847) 253-6638
Type: parochial (Lutheran)
Superintendent: Dennis Gehrke
Enrollment: 480
Serves grades: preschool-8
Information contact: Dennis Gehrke
Web: www.stpeter-ah.org

Immanuel Lutheran School

1850 Chestnut Avenue, Glenview 60025
Telephone: (847) 724-1034
Type: parochial (Lutheran)
Principal: None
Enrollment: 70
Serves grades: preschool-6
Information contact: Diane Levin
Web: www.immanuelglenview.org

FREE ESTIMATES

Sunken Concrete?

American guarantees to solve your problem better and save you Money!

Benefits of Concrete Raising

1. The most economical means of accomplishing repair as opposed to complete slab replacement
2. Lower cost-Proven Performance
3. Quicker, Less inconvenience than replacing.
4. Little disruption to traffic and surrounding area
5. Non-Destructive, Non-Interruptive operation

CONCRETE RAISING and LEVELING

BEFORE AFTER



'Mudjacking' pressures a special cement mix under concrete that straightens sinking or irregular:



- SIDEWALKS
- PATIOS, STOOPS
- GARAGE FLOORS
- DRIVEWAYS
- CONCRETE SLABS
- FACTORY FLOORS

Residential and Commercial Work Backed by Written Warranty

AMERICAN MUDJACKING

(847) 459-0517 CONCRETE CLEANING AVAILABLE (773) 745-0606

☆ The Original ☆
Card and Party Outlet
 300 McHenry Rd.
 (Rt. 83 & McHenry Rd.)
 Wheeling
847-808-0100

NEW LOW PRICES!

All Kids License Party Platters
60% OFF*
 *Wheeling store only
 Pooh, Blues Clues, Toy Story, Pokemon, Scooby Doo, Cinderella, Barbie, Monsters, Harry Potter, Sesame Street, Sponge Bob and more!
Easter Plush & Beans!

Balloons for Every Occasion

Card and Party Outlet Coupon

\$3.00 OFF On any purchase of \$10.00 or more. Coupon must be Presented at time of purchase. **SAVE \$3.00**
 One coupon per customer
 SKU#56775
 Not val.d with any other offers Expires 4/15/02

Spas

SPAS STARTING AT

\$2995⁰⁰

Look at these available features!

- Kenwood AM/FM
- Stereo CD Player with sound that surrounds you
- TV
- DVD Player
- Video Player
- 66 Therapy Jets
- Fiberoptic Lights
- Cool Mist Misters
- Mahogany Cabinet



Gazebos

**Solid Wood
Gorgeous
Pool Tables**

Tables that sold from \$5295 to \$7995 will be sold for 50% off or more

No Veneer or Laminate

- 1" Matched Slate
- Superb Condition
- Quantities Limited



Saunas

Packages Include

- Precut Wall & Ceiling Boards
- Assembled Benches
- Prehung Glass Door
- Assembled Heater Fence
- Assembled Headrest/Backrest
- Trim & Base Super Dek
- Finlandia Heater
- Peridotite Stones
- Control/Contractor Panel
- Light
- Vents
- Accessories



Grills



Dartboards



*Foosball
Tables*



*Hockey
Table*

Strictly Spas

BILLIARDS • SAUNAS • SLOTS & MORE

847/215-SPAS (7727)

503 S. Milwaukee • Wheeling • Near Bob Chinn's

Store Hours

MONDAY-FRIDAY 10-8

SATURDAY 10-6

SUNDAY 11-5





AMERICAN • LATIN • ITALIAN • CONTINENTAL • MEXICAN

Enjoy a Taste of

Hackney's



Family owned and operated since 1939.
We're not just burgers anymore!

We are pleased to announce the reopening of the Poet's Corner. the completely remodeled downstairs pub is perfect for your next party, business meeting, or casual gathering. Open to the public most Friday and Saturday nights.

241 S. Milwaukee Ave. in Wheeling
847/537-2100



Easter Sunday Champagne Brunch Buffet

(11-3 pm)

Children 6 -12 yrs. \$6.95

Children Under years 6 Eat Free

\$14⁹⁵

Featuring an Ever Changing Array of 100 Mouthwatering Specials ranging from all Your Favorite Breakfast Dishes to Chef's Carving Stations, Baron of Beef, Delicious Seafood and a Sumptuous Sweet Table

UNLIMITED CHAMPAGNE!

Cocktails and Wines at Reduced Prices
Huge Margaritas, Mimosas and Bloody Marys \$2.95

For Reservations (847) 537-6710

Fax (847) 537-6732



You'll Be Pleasantly Surprised



Casual Dining Cocktails & Banquets

At The Palwaukee Inn Hotel and Conference Center
1090 S. Milwaukee Ave., Wheeling • (847) 537-6710

Easter Sunday Special

Snow Crab Legs

Incl. Soup, Salad, Side Dish

22⁹⁵

"BEST SEAFOOD 2001"

Featuring the ultimate selection of fresh seafood and prime dry aged steaks.

SAVE \$8⁰⁰ off

ANY 2ND REG. ENTREE WITH THIS COUPON
THRU APRIL 14TH, 2002

Cannot be used in conjunction with any other coupon offers or Holidays



CY'S CRAB HOUSE

933 N. Milwaukee, Wheeling
(847) 279-1700



HOME OF THE
"SPINING SALAD BOWL"

DON ROTH'S BLACKHAWK

PRIME RIB • STEAK • FRESH SEAFOOD

YOU'LL BE SPRINGING WITH JOY OVER OUR "SPINNING SALAD BOWL."

COME TASTE THE 84 YEARS OF BLACKHAWK TRADITION, WITH OVER 30 YEARS ON "RESTURANT ROW" IN WHEELING.

EXPERIENCE DON ROTH'S!

Open 7 Days A Week
Early Dinner Menu Mon. - Fri. 4:00 pm - 5:30 pm
In Wheeling, On Milwaukee Ave.
Just North of Dundee Rd.

847-537-5800

donroths.com

CASUAL • SEAFOOD • GERMAN • FRENCH & IRISH

the Wheeling AREA



Tuscany
Wheeling

Phil Stefani
SIGNATURE RESTAURANTS

"... as close to Toscana as you can get
without leaving the suburbs!"



Experience Northern Italian cuisine and impeccable service!
Complete with three stunning private dining rooms,
Tuscany truly captures the warmth of North Shore dining.

• Live entertainment Thursday-Saturday Evenings •

550 S. MILWAUKEE AVE. • WHEELING
847.465.9988

www.StefaniRestaurants.com



THE 94TH AERO SQUADRON

A Restaurant to Remember
Lounge and Banquets

1070 S. Milwaukee Ave., Wheeling
Located on the Palwaukee Airport

Open Monday thru Thursday 4pm-11pm,
Friday and Saturday 4pm-2am and Sunday 9am-11pm.

"A Restaurant To Remember". Cozy and Fun
Casual Fine Dining. Experience the finest USDA
Prime Steaks, Seafood and much more. Watch the
airplanes on the Runway while you dine.

Daily Early Bird Menu 4pm - 6pm.

Sunday Brunch Buffet 9am-2:30pm. Late night
entertainment, Fridays and Saturdays with a
complimentary buffet at midnight. Free Happy Hour
Buffet Daily 4-8pm. Sunday Singles Dance 7pm-
11pm. Banquet Facilities Available up to 200,
Weddings, Anniversaries, Birthdays, Meetings,
Holiday Parties, etc. We are the perfect venue for
a memorable day. All major credit cards accepted.

For Reservations Call (847) 459-3700.

Serving beef that
doesn't meet USDA standards.
(It exceeds them.)



Weber Grill

RESTAURANT

Classic Outdoor Grilling

MILWAUKEE AVENUE NORTH OF LAKE COOK ROAD, WHEELING (847) 215-0996

BUTTERFIELD ROAD AND MEYERS ROAD, LOMBARD (630) 953-8800

STATE STREET AND OHIO STREET, DOWNTOWN CHICAGO...COMING SOON

www.weberrestaurant.com

Quizno's
SUBS

Wheeling
250 E. Dundee Rd.
847-419-9416
Arlington Heights
847-394-2700
Vernon Hills
847-247-0500

Quizno's Classic Subs are full of flavor with a nice
selection of low fat varieties (less than 7 grams)

"ALL NEW"
KIDS MEAL FREE

PARTY FIX!
PARTY SUBS

Daily after 3 PM
All Day Weekends
1 Free Kids Meal
with Each Adult
Purchase. Dine In
Only (Reg. Sandwich,
Chips and Drink)
No Double Discounts

For All Occasions
Along with a list
of corporate catering
specials
(From 1 to 100 Feet)
Corporate
Delivery Available

Don't Forget To Ask About Our Frequent Diner Card

Recreation

Forest preserves

Potawatami Woods

Entrance location: off Dundee Road

Capacity: 500 people

Amenities: Shelter, picnic areas, well, primitive restrooms

Telephone:

Cook County Forest Preserve: (800) 870-3666

Conservation Department: (708) 771-1330

Recreation Department (to reserve a shelter): (708) 771-1055

Dam No. 1

Entrance location: Off Milwaukee Ave., near Hintz.

Capacity: 1,300 people

Amenities: Two groves, shelter, picnic areas, well, primitive restrooms, fishing, canoeing

Telephone:

Cook County Forest Preserve: (800) 870-3666

Conservation Department: (708) 771-1330

Recreation Department (to reserve a shelter): (708) 771-1055

River Trails Nature Center

Location: 3120 N. Milwaukee Ave., Prospect Heights

Acreage: 364 acres

Amenities: Restrooms; hiking trails; museum; live small animal display; programs; classes; field trips; naturalist on duty; adjacent to Allison, Lake Avenue picnic areas

Telephone: (847) 824-8360

Hours: Parking and trails: March-October: 8 a.m. to 5 p.m. weekdays, 5:30 p.m. weekends and holidays. November-February: 8 a.m. to 4:30 p.m. daily. Exhibit building: March-October: 9 a.m. to 4:30 p.m. Monday-Thursday, 5 p.m. weekends and holidays, closed Fridays. November-February: 9 a.m. to 4 p.m. daily, except Friday.

Bowling alley

Jeffery Lanes

125 N Wolf Road

Number of lanes: 8

Amenities: bar; snacks; karaoke; birthday, holiday, company parties

Price per game: \$2.00

Shoe rental price: \$1.00

League play hours: Tuesday, Wednesday nights and every other Sunday; Wednesday morning, senior league

Open bowling hours: Call for information

Special play hours: 6 p.m. to 2 a.m. Friday, glow-in-the-dark bowl

Hours of operation: 9 a.m. to 2 a.m. daily

Reservations: (847) 537-5370

Riding Stable

Wedgewood Riding Center Farm

699 N. Milwaukee Ave.

Amenities: indoor and outdoor arenas; located next to Cook County Forest Preserve trails

Services: boarding, stables, horse training, riding lessons, classes, hunter training

Hours: 9 a.m. to 9:30 p.m. Monday through Friday; 8 a.m. to 5 p.m. Saturday and Sunday (winter); 8 a.m. to 6 p.m. Saturday and Sunday (summer)

Open riding: \$25/hour; no beginners

Lessons/training: Call for information and fees

Reservations: (847) 537-9610

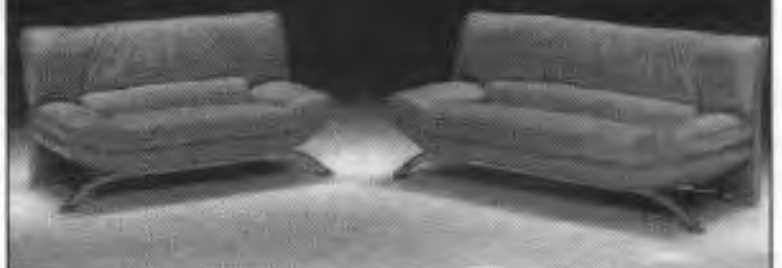
UNIVERSAL UPHOLSTERING, INC.

853 W. Dundee Rd. Wheeling 847.537.8009
www.universalupholstery.com

- ❖ Custom-made furniture
- ❖ Custom-made kitchen corners & headboards from vinyl, leather, fabric, etc.
- ❖ Upholstery & restoration of leather furniture
- ❖ Cleaning & conditioning leather furniture
- ❖ You can also purchase decorative skins of different animals

20% Off

Cleaning & Conditioning of Leather Furniture
any order over \$100



Also visit us at

www.goldxchange.com

Your On-Line Coupon Source

HOUSEWALK FURNITURE

10% OFF

When You Mention this Ad

Offer Valid Thru 4-30-02

Largest Consignment Showroom in the Area.

- Living Room
- Dining Room
- Bedroom
- Kitchen
- Accessories

835 W. Dundee, Wheeling • 847-229-2673

(SW Corner of Dundee & Elmhurst Rds.)
housewalkfurniture.com

ENGLANDER BEDDING SLEEP SHOP

Mon.-Thur. 10-7, Fri.-Sat. 10-6, Sun. 11-4

Never the same store twice!

Give A Gift That Will Last a Lifetime

Invest in Your Grandchild's Future with a Tax-Advantaged College Savings Program

Introducing Bright StartSM, a tax-advantaged savings plan to help pay for college expenses.

Bright  StartSM

There's never been an opportunity to save like this before — invest as little as \$25 or as much as \$235,000 for each child.* Earnings grow federally tax-deferred until withdrawn to pay for tuition, books, room and board. After December 31, 2001, all qualified withdrawals will be free from federal income taxes. (Please note that the federal tax exemption is due to expire on December 31, 2010, unless the law providing for the federal exemption is extended.)

Please call Jay K. Steinhilber
Second Vice President—Investments
at (847) 480-6373
for a free enrollment kit.

Because Strictly Speaking,
Potato Chips
Don't Count As Vegetables.

HEALTH & FITNESS

Mondays.

Health and Fitness news you can use.

Daily Herald

Big Picture. Local Focus
dailyherald.com

ILLINOIS STATE TREASURER
JUDY BAAR TOPINKA

INVESTMENT MANAGER
SALOMON SMITH BARNEY
A member of citigroup

Investments in Bright Start are not guaranteed by the State of Illinois, the State of Illinois Treasurer's Office, Salomon Smith Barney Inc. or any affiliate of Salomon Smith Barney Inc., and are subject to investment risks, including the loss of the principal amount invested. Salomon Smith Barney does not provide tax or legal advice. Please consult your tax and/or legal advisor for such guidance.

Bright Start is a registered service mark of the State of Illinois Treasurer's Office. Salomon Smith Barney is a registered service mark of Salomon Smith Barney Inc.

Village sprouted as rest stop between Chicago, Milwaukee

BY LINDA READING

Wheeling Historical Society, Museum Curator

Wheeling began in 1833 when a man named Mr. Sweet staked a claim on land just north of today's Palwaukee Municipal Airport. Later that year, he sold his claim to George Strong, who began development of the area soon to become known as Wheeling.

In 1835, Joseph Filkins built the first residence and claimed 720 acres of land from east of the Des Plaines River, north along Dundee Road, and all the way to where the Kmart store stands today.

Two years later, Filkins built the first Stagecoach tavern, hotel and post office on Milwaukee Avenue, where Walgreen's and other stores now stand. Russell Wheeler and Charles Daniels opened the first general store on the south side of Dundee Road, where Wheeling Shopping Center sits today.

Between 1836 and 1843, James Parker opened Parker Hotel, Wheeling's second hostelry. More stores, hotels and restaurants were opened, and Wheeling began to grow and cater to the stage coach

Historical society

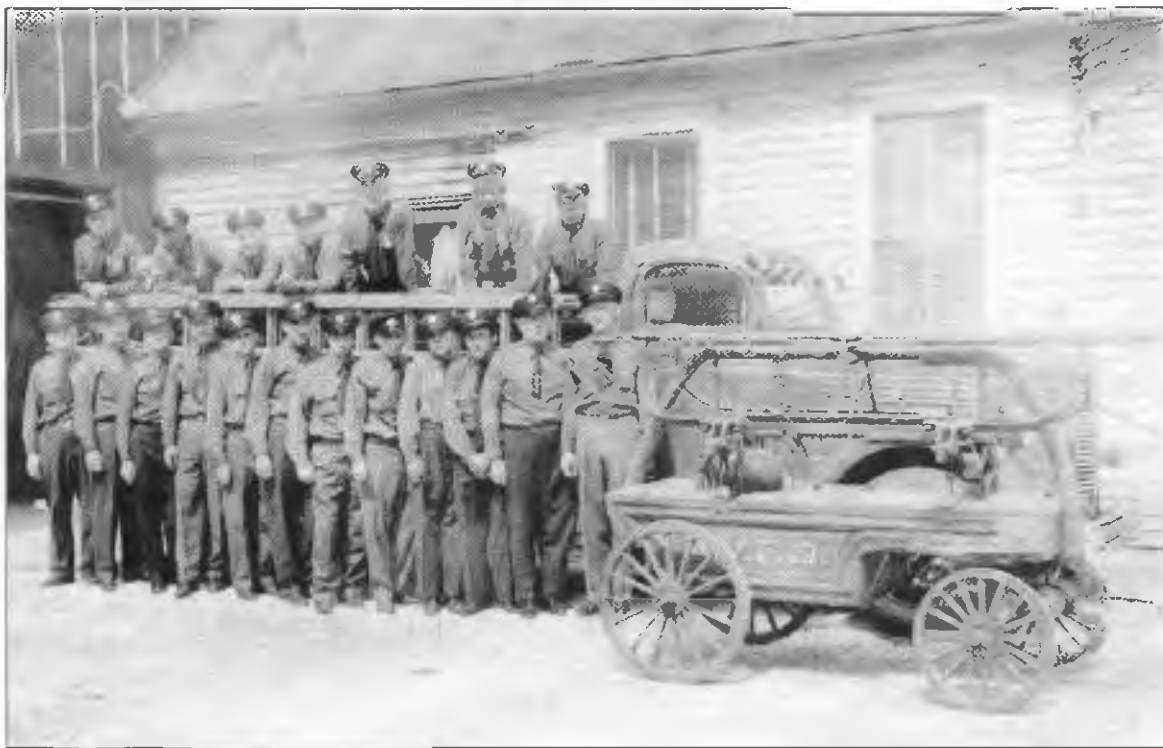
Meetings of the Wheeling Historical Society are held at 7:30 p.m. on the fourth Wednesday of each month in September, October, November, January, February, March and April in the society's museum, located at the Chamber Community Center in Chamber Park, 251 N. Wolf Road. To join the society, write to the Wheeling Historical Society, P.O. Box 3, Wheeling, IL 60090.

passengers between Chicago and Milwaukee. Thus, Restaurant Row had its beginnings.

In 1886, the Wisconsin Central Railroad came through west of the village limits, a depot station was built and Wheeling began to take off. In June 1894, citizens petitioned to incorporate the town as village of Wheeling. By July 17, Henry Boehmer was elected our first mayor, together with six trustees, village clerk and police magistrate.

Our first village hall was built on Milwaukee Avenue, just south of Center Street in 1895.

In 1920, the Knights of Columbus built Columbia Gardens Country Club on N. Milwaukee Ave. In 1936, it was sold and the name changed to Bon Air. Then in 1940, the name



PHOTOS COURTESY WHEELING HISTORICAL SOCIETY

In 1896, the first volunteer fire department was established; Chris Uetz was named chief; and in 1897, firefighters held the first fireman's ball and picnic to raise money for fire equipment.

was changed to Chevy Chase Country Club and today is owned by our Wheeling Park District.

In 1956 the population had hit 5,417 and grew to 6,162 by the building of Meadowbrook East subdivision in 1959.

The 1970s opened with Wheeling adopting by referendum the manager-council form of government. In 1979, Riverside Plaza development began on the southeast corner of Dundee and Milwaukee, thus ending a era of

historical buildings and a way of life for the old-timers and a beginning of a new Wheeling.

The 1980s came and the Arlington Country Club, consisting of 131 acres, was annexed into Wheeling.



B & L Liquors

A MISKA AFFILIATE

Your One Stop Liquor Store.

If You Don't See It, Ask!

We Will Get It For You!

Hours:

Mon. - Thurs.
10AM - 9:30 PM

Fri. & Sat.
10AM - 10:30 PM

Sun.
11:30AM - 7:30 PM

WE ACCEPT



FRANCISCAN CABERNET

\$19⁹⁹
750ML

BACARDI RUM
Light or Dark

\$16⁴⁸
1.5L

ROLLING ROCK
BEER

\$6⁹⁹
12 PK BTLs

STOLI
VODKA

\$27⁹⁹
1.75L

SUTTER HOME
WHITE ZINFANDEL

\$6⁹⁹
1.5L

BECKS
BEER

\$9⁹⁹
12 PK BTLs

DIMITRI
VODKA

\$8⁹⁹
1.75L

COORS BEER
Reg. or Light

\$6⁹⁹ 12 PK \$10⁹⁹ 24 PK

DAILY SPECIALS

NO COVER CHARGE

767 W. DUNDEE ROAD
WHEELING

Dundee & Rt. 83

847-279-8000



PS PUB

NEXT DOOR TO
B & L LIQUORS

771 W. DUNDEE ROAD WHEELING

847-279-8000

Open Daily 10 - 2 AM
Sun. 11:30 - 2 AM

Tuesday Nights Ladies Night!

Places of worship

Antioch Bible Church
480 S. Elmhurst Road, Wheeling
Telephone: (847) 537-9632
Web: www.antiochministry.org

Congregation Dor Chadash
Meets at clubhouse at Harmony Village, One Fern Drive, Wheeling.
Telephone: (847) 520-0037

Calvary Presbyterian Church

704 Old McHenry Road, Wheeling
Telephone: (847) 459-3080

Hosanna Korean Presbyterian Church
385 S. Buffalo Grove Road, Wheeling
Telephone: (847) 537-8002

Our Savior Evangelical Free Church
300 S. Schoenbeck Road, Wheeling

Telephone: (847) 459-4440
Web: www.osefc.org

St. Joseph the Worker Catholic Church
181 W. Dundee Road, Wheeling
Telephone: (847) 537-2740

St. Alphonsus Church
411 N. Wheeling Road, Prospect Heights.
Telephone: (847) 255-7452
Web: www.saintalphonsus.com

Health organizations

Northwest Community Healthcare Treatment Center

Lake Cook Road at Route 83
Type: Urgent care facility
Telephone: (847) 459-6100
Affiliation: Northwest Community Healthcare, Arlington Heights
Specializations: 24-hour emergency room facility providing laboratory and x-ray services, occupational health services, cardiac rehabilitation and preventive cardiology services. Also provides injury care, wellness programs, work-site evaluations, physical examinations and health screenings
Web: www.nch.org

Advocate Good Shepherd Hospital

450 W. Route 22, Barrington
Type: Hospital
Telephone: (847) 381-9600
Affiliation: Advocate Health Care
Number of beds: 156
Specializations: trauma center, care for critically ill and underweight newborns, oncology, cardiology, orthopedics, surgical, rehabilitative and women's services
Web: www.advocatehealth.com

Condell Medical Center

801 S. Milwaukee Ave., Libertyville
Type: Hospital
Telephone: (847) 362-2900
Affiliation: Condell Health Network
Number of beds: 168 inpatient beds, 12 nursery beds
Specializations: open-heart surgery, neurosurgery and women's services
Most popular program offering: intergenerational day center for kids and adults, Centre Club fitness

centers and the Inner spa, which provides bedside spa services to inpatients
Web: www.condell.org

Glenbrook Hospital

2100 Phingston Road, Glenview
Type: Hospital
Telephone: (847) 657-5800
Affiliation: Evanston Northwestern Healthcare
Number of beds: 126
Specializations: Level II trauma center, cardiac catheterization and ultrafast CT scan, hip and knee replacement; eye and vision center for LASIK and other eye surgery, sleep center, Parkinson's disease center, pediatric services and surgery in partnership with Children's Memorial Hospital
Web: www.enh.org

Highland Park Hospital

718 Glenview Ave., Highland Park
Type: Hospital
Telephone: (847) 432-8000
Affiliation: Evanston Northwestern Healthcare System
Number of beds: 240
Specializations: Kellogg Cancer Care Center and Cardiovascular Care Center, mental health services including eating disorders and substance abuse programs and center for adolescent psychiatric care, Osteoporosis Prevention and Research Center, Breast Center and Family Birthing Center, Trauma Level II Center
Web: www.ehn.org

Holy Family Medical Center

100 N. River Road, Des Plaines
Type: Hospital
Telephone: (847) 297-1800
Affiliation: Resurrection Health Care

Number of beds: 165
Specializations: Level II Trauma Center, Keys to Recovery substance abuse unit, women's imaging center, cardiac care, orthopedics, obstetric services and occupational health
Web: www.reshealth.org

Advocate Lutheran General Hospital

1775 W. Dempster St., Park Ridge
Type: Hospital
Telephone: (847) 723-2210
Affiliation: Advocate Health Care
Number of beds: 608
Specializations: children's hospital; level I trauma center; cancer care center; cardiovascular risk reduction center; counseling center for psychotherapy services and spiritual healing; teaching hospital; and advanced treatment in cardiovascular, orthopedics, gynecology, geriatrics, digestive disorders, ear, nose and throat disorders and hormonal disorders
Web: www.advocatehealth.com/lutheran

Children's Hospital of Wisconsin Clinic

310 Greenleaf Ave., Greenleaf Professional Building Suite 201, Gurnee
Type: Outpatient clinic treating infants, children and adolescents
Telephone: (847) 662-4380
Affiliation: Children's Hospital of Wisconsin-Kenosha, a private, independent medical center
Specializations: pediatric asthma/allergy, audiology, cardiology, dermatology, endocrinology, gastroenterology, hematology, nephrology, rheumatology and urology
Telephone: (414) 266-5420
Web: www.chw.org

French Culinary Experience

35 Years Experience



- Gourmet Cooking Instruction for all ages
- Gift Certificates Available
- Private Chocolate Class
- Hands-on Class
- Day, Evening, Weekend
- Summer Trip in Lyon

Classes Starting Soon!
Call to Enroll!

281 Messner Dr. Wheeling Illinois 60090 847-215-1931
www.frenchcookingschool.com

"Building upon a proud tradition"



Rendering of the new 18th hole, 548 yards, par 5

Coming in 2003...

Chey Chase Golf Course

Under renovation in 2002

Featuring:

- 18 holes, 6,608 yards, Par 72
- Bentgrass and irrigated fairways
- All new USGA greens
- Challenging course layout
- Golf outings available



1000 N. Milwaukee Ave., Wheeling
www.wheelingparkdistrict.com
847/537-0082

Early Spring Savings on Quality Services

Get your Air Conditioner Precision Tune-UP for ONLY \$79.95

Includes up to 2 lbs. of Freon (a \$52 value) if needed.

Designed for all makes and models—the Air Conditioner Precision Tune-Up includes a **15-Point Professional Cleaning and Safety Inspection** of your air conditioning equipment. It can help prevent costly air conditioning problems **BEFORE** they start, so your home stays at a comfortable temperature throughout the summer.

If our Champion Technician® fails to find any potential problems with your air conditioner and it breaks down within 90 days of your Tune-Up and requires repair for any reason, we will credit the cost of the Tune-Up to your repair... No Questions Asked!

Our Champion Technician® will:

- Clean Condensing Coil
- Monitor Evaporator Temp Drop
- Measure Operating Pressures
- Check Evaporator Superheat
- Monitor Refrigerant Charge and Test for Possible Leaks
- Measure Voltage and Amperage to All Motors with Meter
- Inspect Blower Wheel Condition
- Lubricate All Moving Parts
- Inspect Filters
- Test Pressure Switch Operation
- Monitor Start Capacitor and Potential Relay Operation
- Visually Inspect Compressor contactor for Damage and Monitor Operation
- Tighten all Wiring and Connections
- Test Thermostat Operation
- Clean Condenser Drains

Our Tune-UP includes all these services

NO interest or payments for 12 months for Qualified Buyers!!

A Complete Air Conditioning System IS Affordable!

Reduce your cooling bills by as much as 30%

Lennox Series HS26 provides homeowners with excellent value and comfort, and advanced airflow for quiet, efficient 12 SEER performance. It's affordably priced and built by Lennox for lasting comfort.

With Comfort Masters, your installation is first class, with no compromises in quality. We use only our own trained installers – *never subcontractors*.



Installation includes:

- ✓ Ten-Year Factory Compressor Warranty
- ✓ Five-Year Parts and One-Year Labor Warranty
- ✓ Matching Upflow A-Coil
- ✓ Concrete Pad, 10 feet of Electric, 20 feet of Copper Tubing

All purchases eligible for our **PLUS** Maintenance Agreement with 15% discounts on repairs

LIMITED TIME ONLY—ACT QUICKLY for these Pre-Season Equipment Values!

Phone 847-419-0909
for a no-obligation visit from a Comfort Advisor

COMFORT MASTERS HEATING & COOLING, LLC

Service Experts, Inc.

SP02

OTHER EARLY SPRING SAVINGS FROM COMFORT MASTERS

SAVE \$20

On any Service Call
with this coupon

24 Hr. Emergency Service
on All Makes & Models

Coupon must be presented to technician upon arrival

Comfort Masters **Service Experts, Inc.** 847-419-0909

Not valid with other offers or prior services. Offer expires 4-30-02.

\$50 OFF

Duct Cleaning & Air Cleaners
with this coupon



Aprilaire

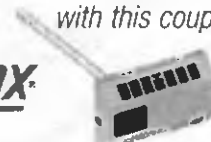
HIGH EFFICIENCY AIR CLEANER

Comfort Masters **Service Experts, Inc.** 847-419-0909

Not valid with other offers or prior services. Offer expires 4-30-02.

\$100 OFF

Lennox Germicidal Lights
with this coupon



LENNOX

IMPROVE AIR QUALITY

Comfort Masters **Service Experts, Inc.** 847-419-0909

Not valid with other offers or prior services. Offer expires 4-30-02.

THE SIGN OF QUALITY HEALTH CARE

Holy Family Medical Center

As your family grows and changes, your health care needs will vary along the way. At

Holy Family Medical Center, we're dedicated to providing the care you need in every stage of life, from our inviting Family Birthplace—with the best possible care for babies and mothers—to our state-of-the-art cardiology services.

Whether you need orthopedic services for a sports injury or our advanced Emergency Department, **count on us for the health care you and your family deserve at every stage of life.**

To find a physician who meets your needs, call **1-877-RES-INFO (1-877-737-4636)**.



**Resurrection
Health Care®**

For All of You, All of Your Life

Holy Family Medical Center
100 North River Road, Des Plaines 60016



**Resurrection
Health Care**

www.reshealth.org